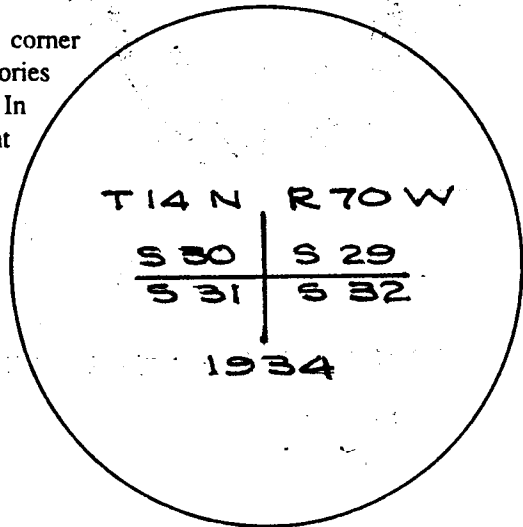


Wyoming Certified Land Corner Recordation Certificate

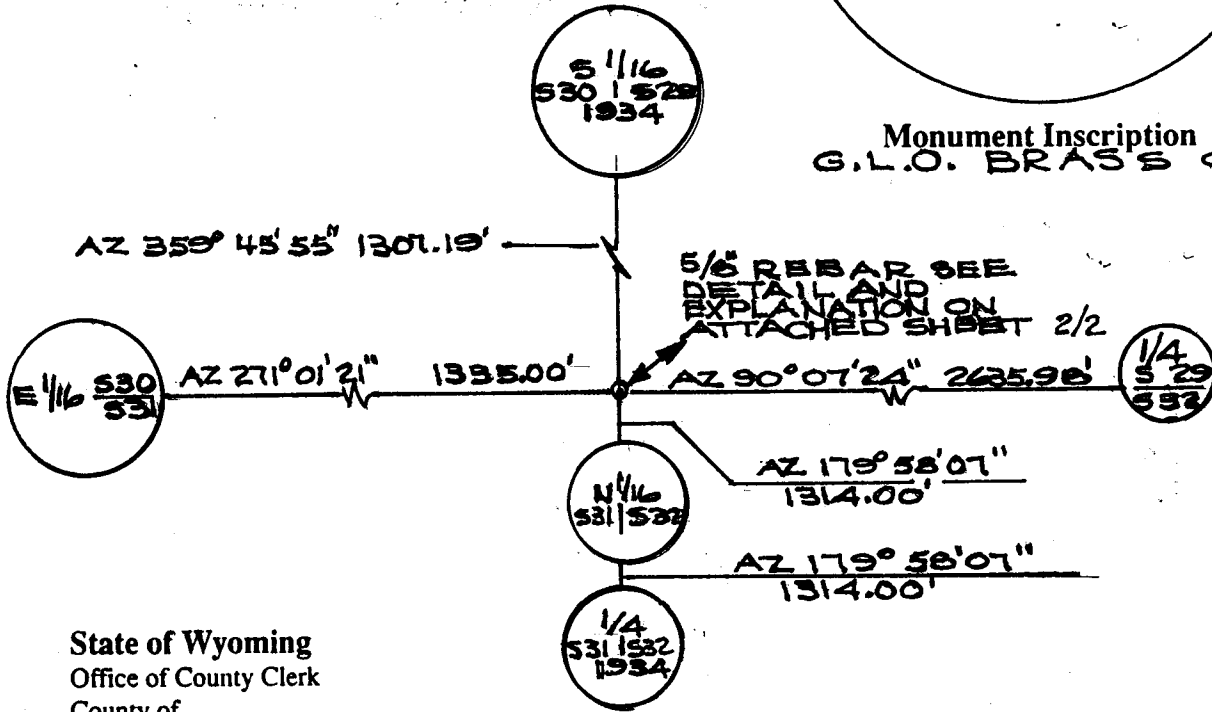
This form is to be completed in accordance with W.S. 36-11-101, printed in black ink or typed, and shall be for one individual corner.

Describe below, or show in sketch attached to this form, the corner evidence found. Include condition and type of monument, accessories and ties. Describe any maintenance or rehabilitation performed. In the circle to the right, show monument inscription. If monument is determined lost or obliterated, restate the GLO or BLM original field note record; describe or show the procedure used to reestablish the corner and all data as above for a found monument.

Field Date 10/4/90 Office Reference _____



Monument Inscription
G.L.O. BRASS CAP



5/8 REBAR SEE
DETAIL AND
EXPLANATION ON
ATTACHED SHEET 2/2

RECEIVED
LARAMIE COUNTY
CHEYENNE, WY.
90 OCT 15 AM 11 12

076173

State of Wyoming
Office of County Clerk
County of _____

This Certified Land Corner Recordation Certificate was filed for record on the 15th day of OCTOBER, 19 90, in Book No. T 14-N, R 70-W, on Alpha-Numeric coordinates 5-V and was noted on the Cross Index Plat.

County Clerk

Corner Type:
 Aliquot Corner Other

Section(s) S30 | S29
S31 | S32 Meridian _____

Corner Name SEE Township 14-N Range 70-W Page _____

MONUMENT
INSCRIPTION

Sheet 1 of 2

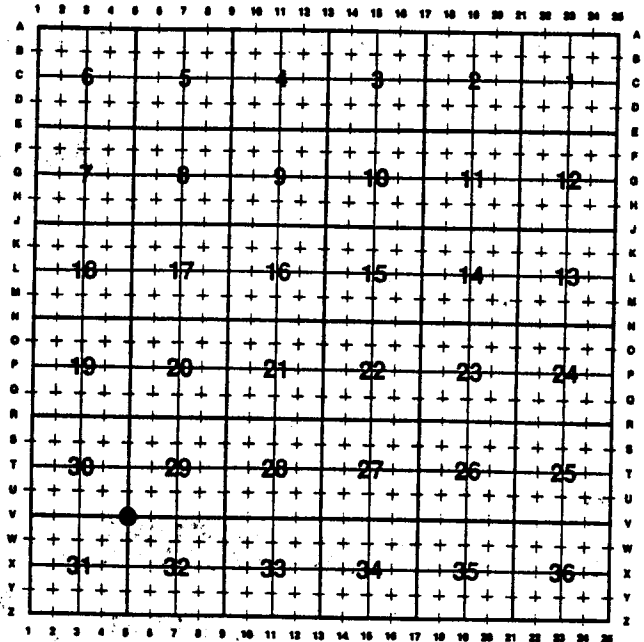
SEE ATTACHED 2/2

**Directions for using the
Cross-Index Plat**

Section, quarter and sixteenth corners will be marked with a dot at the corner location. The alpha-numeric coordinate number is then determined for the intersection of the two lines. A corner that applies to two or more townships shall be filed under all that apply by the use of photo copies.

Closing corners will be indexed under the township in which they control ownership. For 1/64, 1/256, 1/1024 and non-aliquot corners lying between grid designations, mark the appropriate grid area with a dot and use the index code to the north and west (local systems may be used if the method is approved by the County Surveyor or Clerk and a written description of its use is filed in the front of each book of certificates).

Cross Index Plat



State Plane Coordinates (optional)

Zone W WC EC E feet/meters

NAD 1927 NGVD 1929 NAD 1983 NAVD 1988

North (Y) = _____ East (X) = _____ EL = _____

Latitude _____ Longitude _____

Scale Factor _____ Geoid Height _____

Certification

I, WILLIAM B. ARMSTRONG, Wyoming PLS-PE 3153 certify that I, or others under my supervision, have performed the work as described above and completed this form.

Company or Agency ARMSTRONG ENGINEERING SERVICES

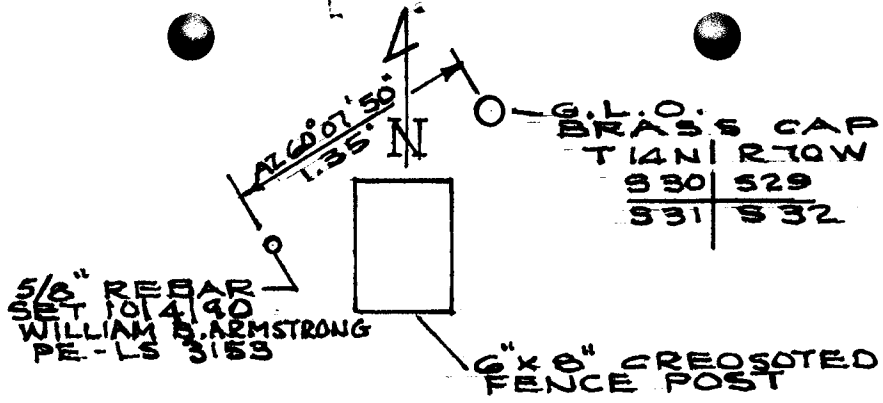
Mailing Address 915 E. CARLSON

Street Address _____

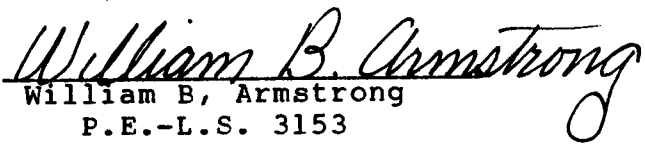
City, State, ZIP CHEYENNE, WY 82009

Telephone, FAX 307 632-2559

William B. Armstrong
 Professional Engineer (Civil) & Land Surveyor
 WILLIAM B. ARMSTRONG
 3153
 Date 10/12/90
 Signature, Seal, and Date
 WYOMING



1. During the latter part of August, 1990, I performed a survey in the NW1/4 NW1/4 Section 32, T-14-N, R-70-W.
2. Certified Land Corner Recordation filed in Laramie County Clerk's office, dated July 5, 1989, Book 1275 Page 862, states that the G.L.O. brass cap was reset.
3. That portion of my boundary survey, done August, 1990, included the northwest corner of the above identified Section 32. During this period of time, the G.L.O. brass cap was not set nor lying at random on the ground in the immediate vicinity.
4. Accordingly, my office preparation for the property boundary survey of the above identified Section 32, included research for the best evidence available to reset the corner common to Sections 29, 30, 31 and and the above identified Section 32.
5. I completed all work on the boundary survey during the month of September and went out on the ground to set the above subject corner on October 4, 1990, only to find that the G.L.O. brass cap common to Section 29, 30, 31 and 32 had been set, by a party or parties unknown to me, in the position shown relative to the 5/8" rebar set by William Armstrong, P.E.-L.S. 3153.
6. I think the position of the 5/8" rebar so located on the Wyoming Certified Land Corner Recordation Certificate and the attached sheet best evidences the location for the corner common to Sections 29, 30, 31 and 32, T-14-N, R-70-W.


 William B, Armstrong
 P.E.-L.S. 3153

1. The first part of the document discusses the importance of maintaining accurate records of all transactions. It emphasizes that this is crucial for ensuring the integrity of the financial statements and for providing a clear audit trail.

2. The second part of the document outlines the specific procedures that should be followed when recording transactions. This includes details on how to handle receipts, invoices, and other supporting documents, as well as the timing and frequency of record-keeping.

3. The third part of the document addresses the role of the accounting system in the overall process. It discusses how the system should be designed to capture all relevant data and how it should be integrated with other business systems to ensure consistency and accuracy.